



Met Office

# Innovation in forward looking Hazard Modelling

Paul Davies, Met Office Chief Meteorologist

# Typhoon Haiyan



PHILIPPINE AIR FORCE VIA REUTERS



# WMO Fact Finding Mission

Going the extra mile

**Going the extra mile – can science deliver??**

Many people didn't understand what is meant by 'storm surge'

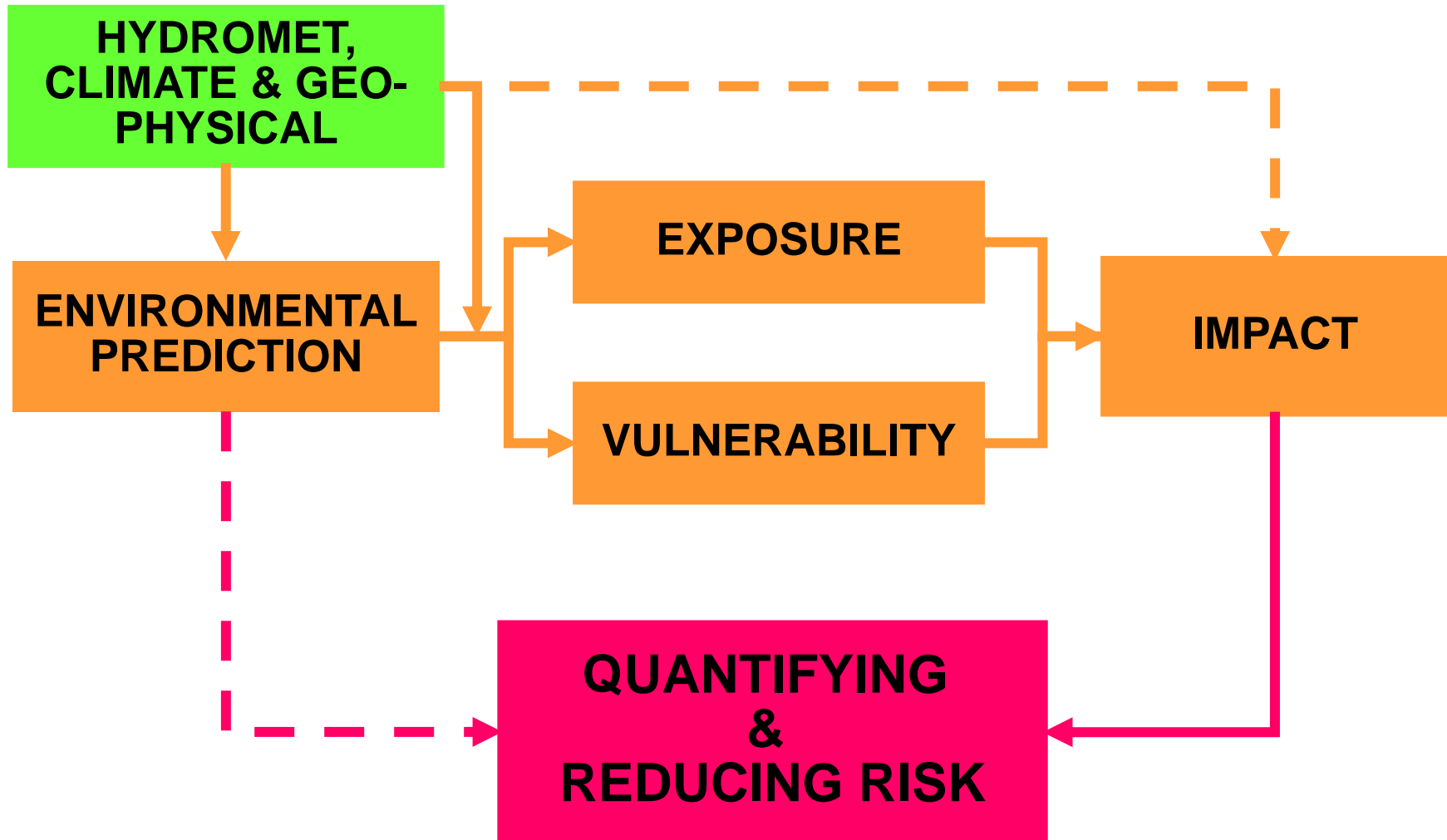
**STAKEHOLDER MEETING, MANILA**

**2014**



# Holistic approach to impact and risk

- Major Uncertainty
- Some progress, still a limiting factor
- Considerable progress





# St Jude Windstorm

## Severe gales 28 October 2014

### Four die as storm hits southern UK



The death toll after a storm hit parts of southern Britain, leading to 607,500 homes losing power, and train and flight cancellations, rises to four.

- LIVE** Storm batters southern Britain
- Were train companies too cautious?
- Q&A: How to claim for damage
- ▶ Footage from around the UK
- In pictures: Storm batters Britain
- Tree crushes sleeping caravan girl
- Two found dead after 'gas explosion'
- Tree falls on car killing driver

#### **LIVE** Storm batters southern Britain

6 minutes ago

Prime Minister David Cameron **tweets**: "Our thoughts are with the families & friends of those who have lost their lives. I pay tribute to our emergency services."...

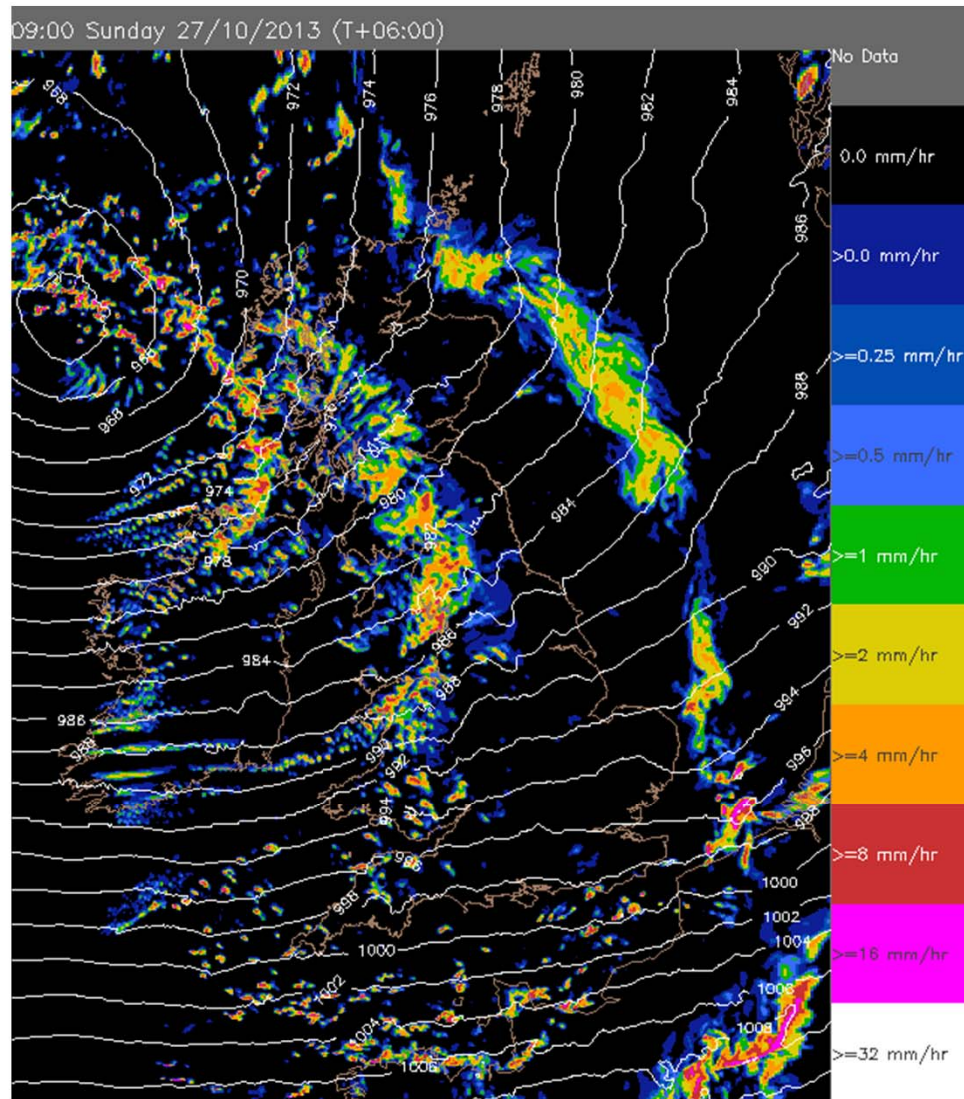
#### Watch/Listen

High winds cause rail chaos	Falling tree moment on CCTV	Trees block roads in Wiltshire	Insurers prepare for storm claims



# Storm-resolving forecasts

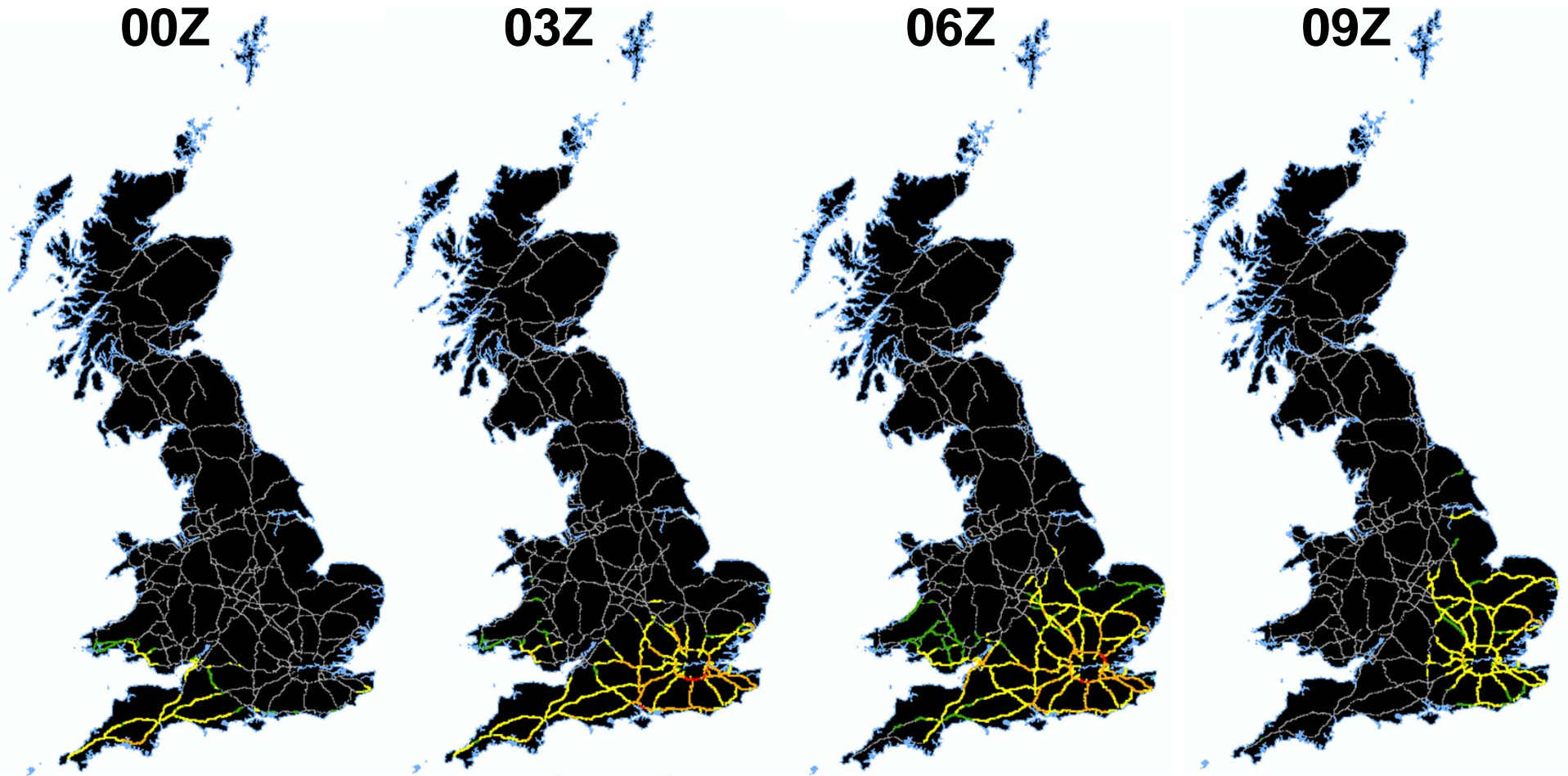
## UKV forecast





# Hazard Impact Modelling

Wind impact on the transport network



Maximum Risk on the UK Road Network

- Low Risk
- Low - Medium Risk
- Medium - High Risk
- High Risk



# Communicating the message

## Conveying uncertainty

### UK braced for severe autumn storm



25 October 2013 Last updated at 12:46



A deepening area of low pressure is heading towards the UK overnight Sunday into Monday.

BBC Weather's Nick Miller has the latest thoughts on where the storm is going and the impact it could have.



# Recognising the challenges

Increasing our vulnerability and exposure





**Met Office**

